

Addendum to NDRN Access Board ANPRM on Rail Vehicle Accessibility Comments

Kenneth Shiotani
Senior Staff Attorney
National Disability Rights Network
820 First Street Suite 740
Washington, DC 20002
(202) 408-9514 x 126
Kenneth.shiotani@ndrn.org



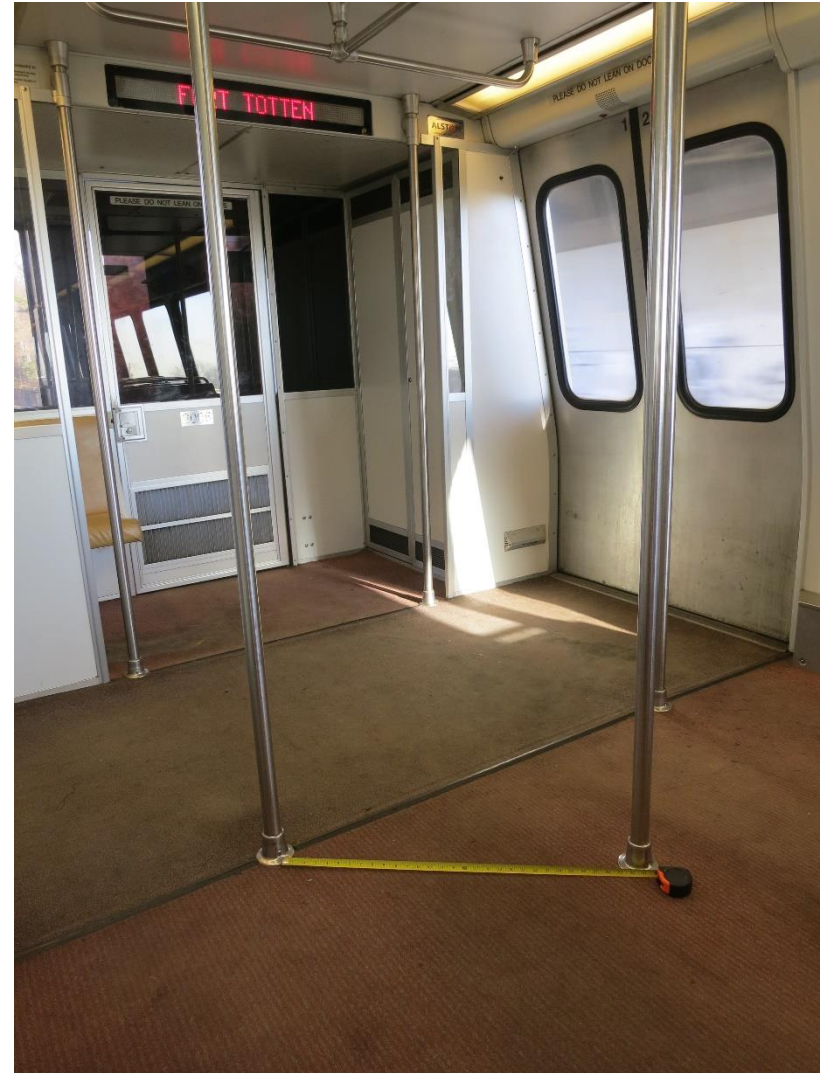
July 14, 2020

Examples of Different Types of Variable Message Signs in Rail Vehicles



Above, retrofitted video screen on New Mexico Rail Runner Bombardier Bi-Level Car showing next station information and No Smoking warning.

Right, DC Metro Rail 3000 series car originally lacked variable message sign. LED next station variable message signs were added when cars were refurbished. Note placement of floor-to-ceiling stanchions creating accessibility barriers.



Examples of Real-Time Route Map Tracking Displays on Rapid Rail Cars



D.C. Metro 7000 series rapid rail cars showing two versions of Real-Time Route Map Tracking displays on D.C. Metro 7000 series rapid rail car.

Examples of Variable Message Signs on Commuter Rail Cars



Interior of MARC Bombardier Multi-Level Commuter rail car. Two variable message sign displays showing basic next stop information in different locations in the car.



Examples of Stanchions with High Contrast Yellow on Rapid Rail Cars



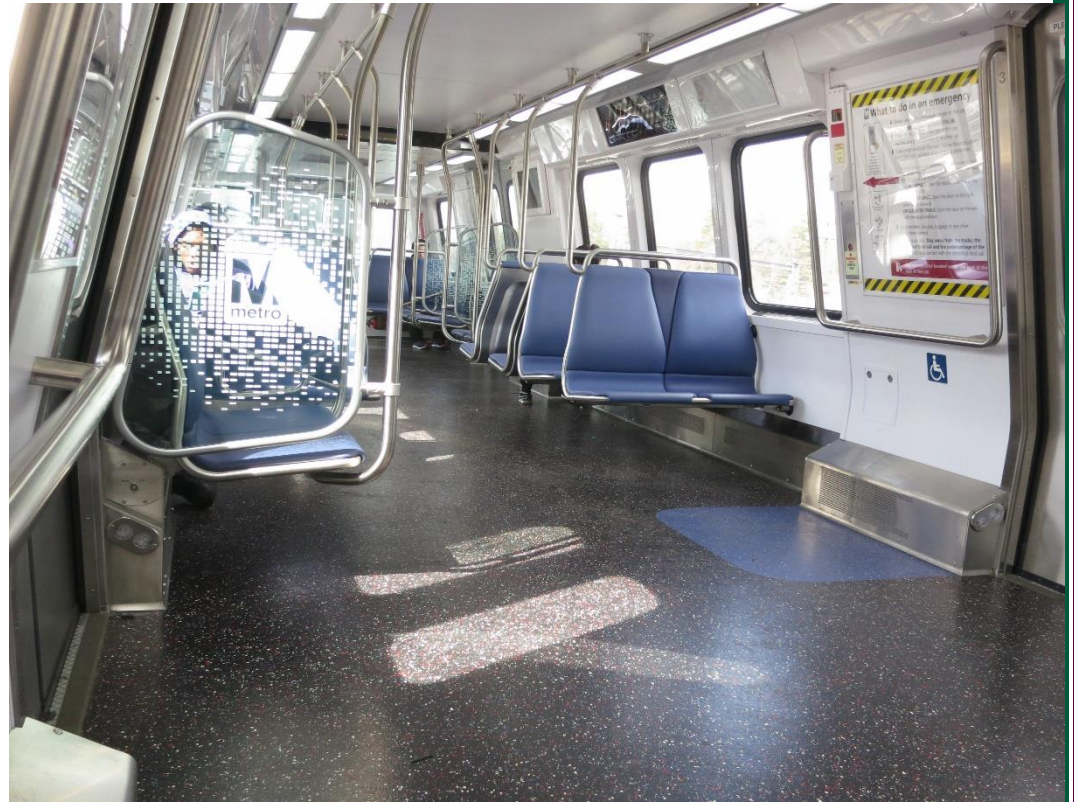
NYC Subway R211 drawing and interior mock up showing high visibility yellow stanchions and handrails

Examples of Rapid Rail cars with Stanchions and handrails providing range of holds and unobstructed space below seats



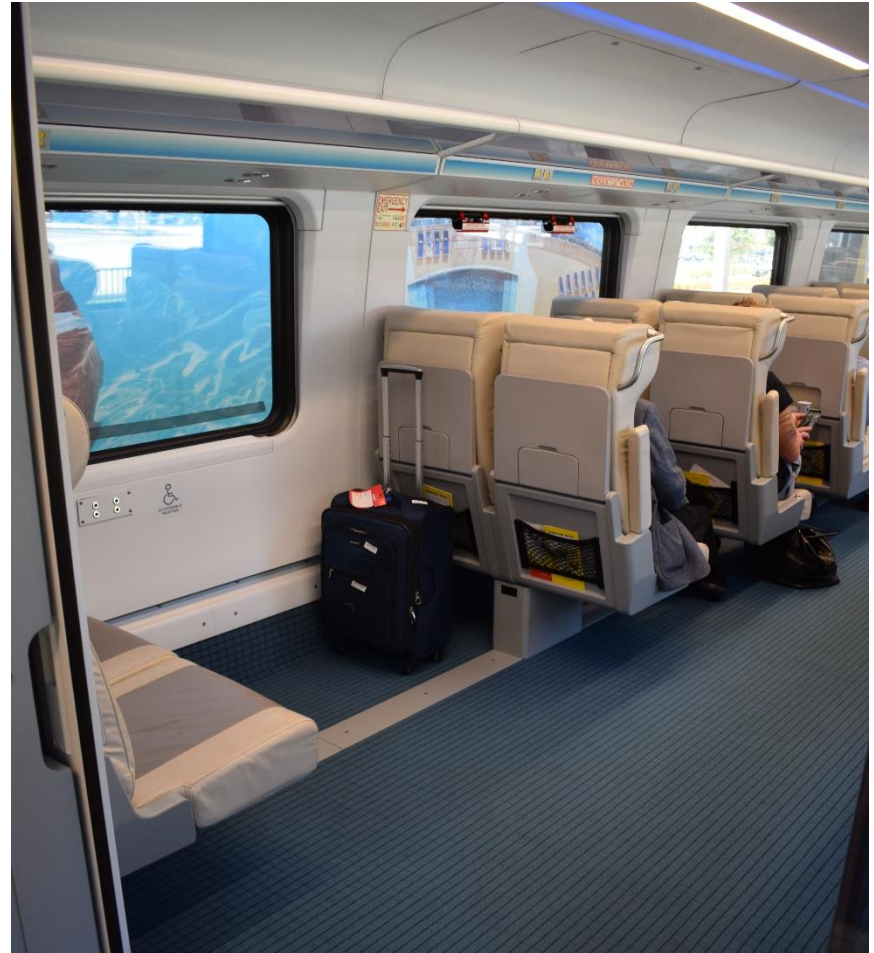
Miami Metro Rail car with transverse seats with handholds on top of seat in left photo and bicycle rack right in right photo and showing stanchions and handrails providing unobstructed space below seats

Examples of Rapid Rail cars with Stanchions and handrails providing range of holds and unobstructed space below seats



Left, NYC Subway R188 car showing stanchions and handrails, Right D.C. Metro Rail 7000 series car with showing stanchions and handrails at different heights and providing unobstructed space below seats

Examples of Commuter & Intercity Rail cars handholds on seats by aisle and movable armrests



On left, MARC Bombardier Multilevel commuter rail car showing handholds at corner of seats and moveable armrests. On right, Brightline intercity rail car showing handholds at corner of seats and movable armrests.